



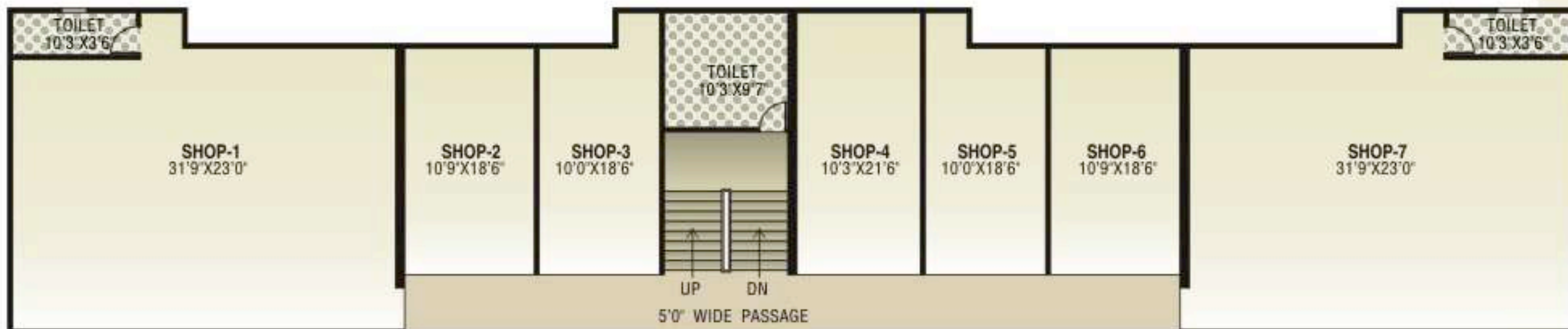
Shantiniketan

Layout Plan

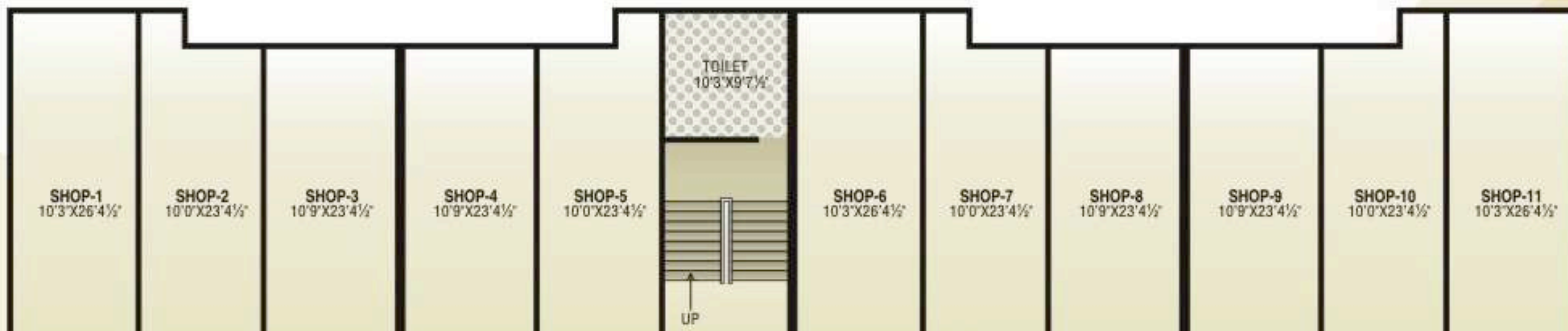




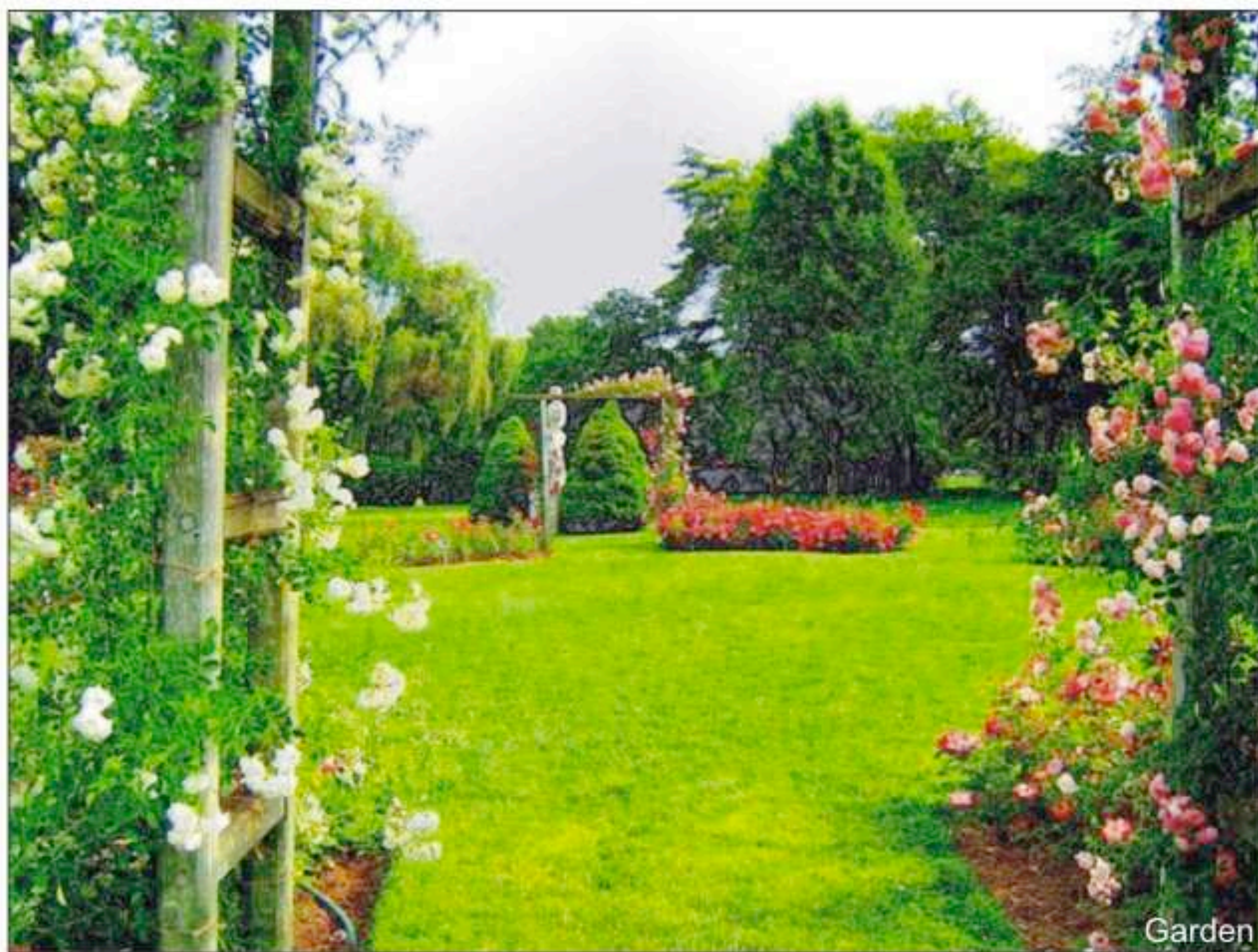
Ground & First Floor Shopping Plan ————— A & B Building



FIRST FLOOR PLAN



GROUND FLOOR PLAN



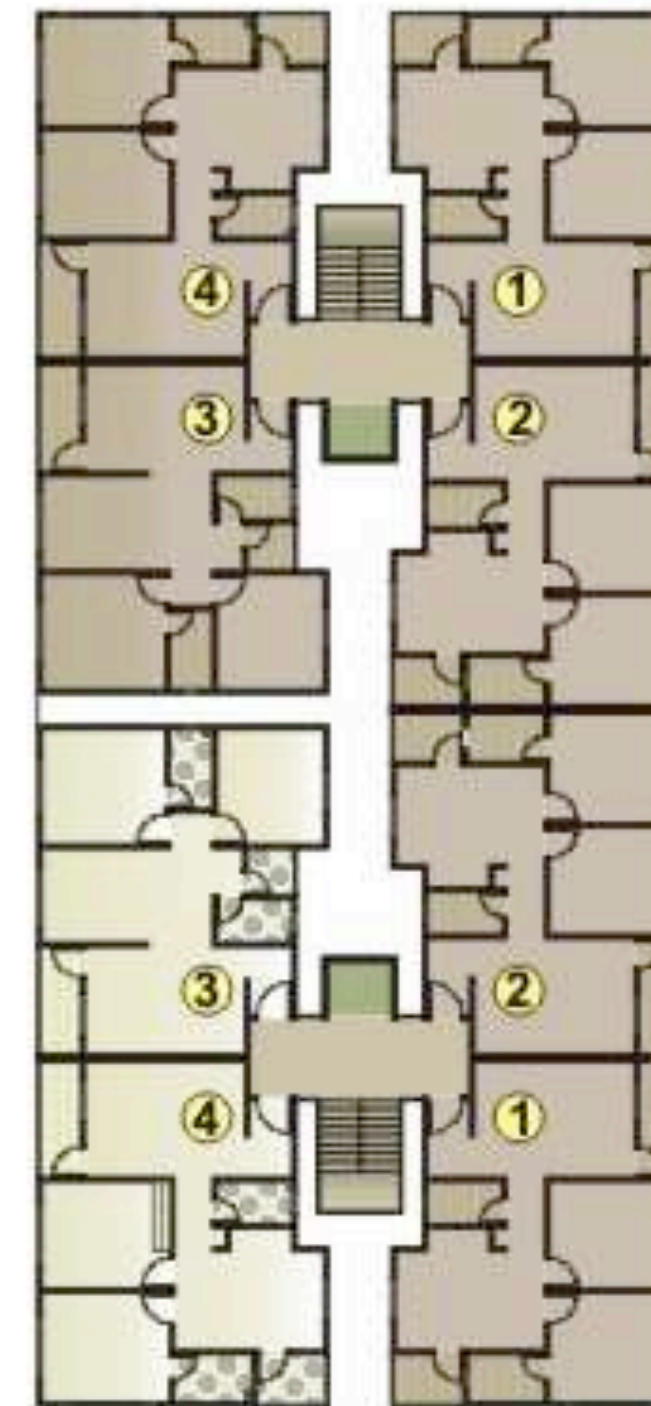




Shantiniketan

Typical Floor Plan

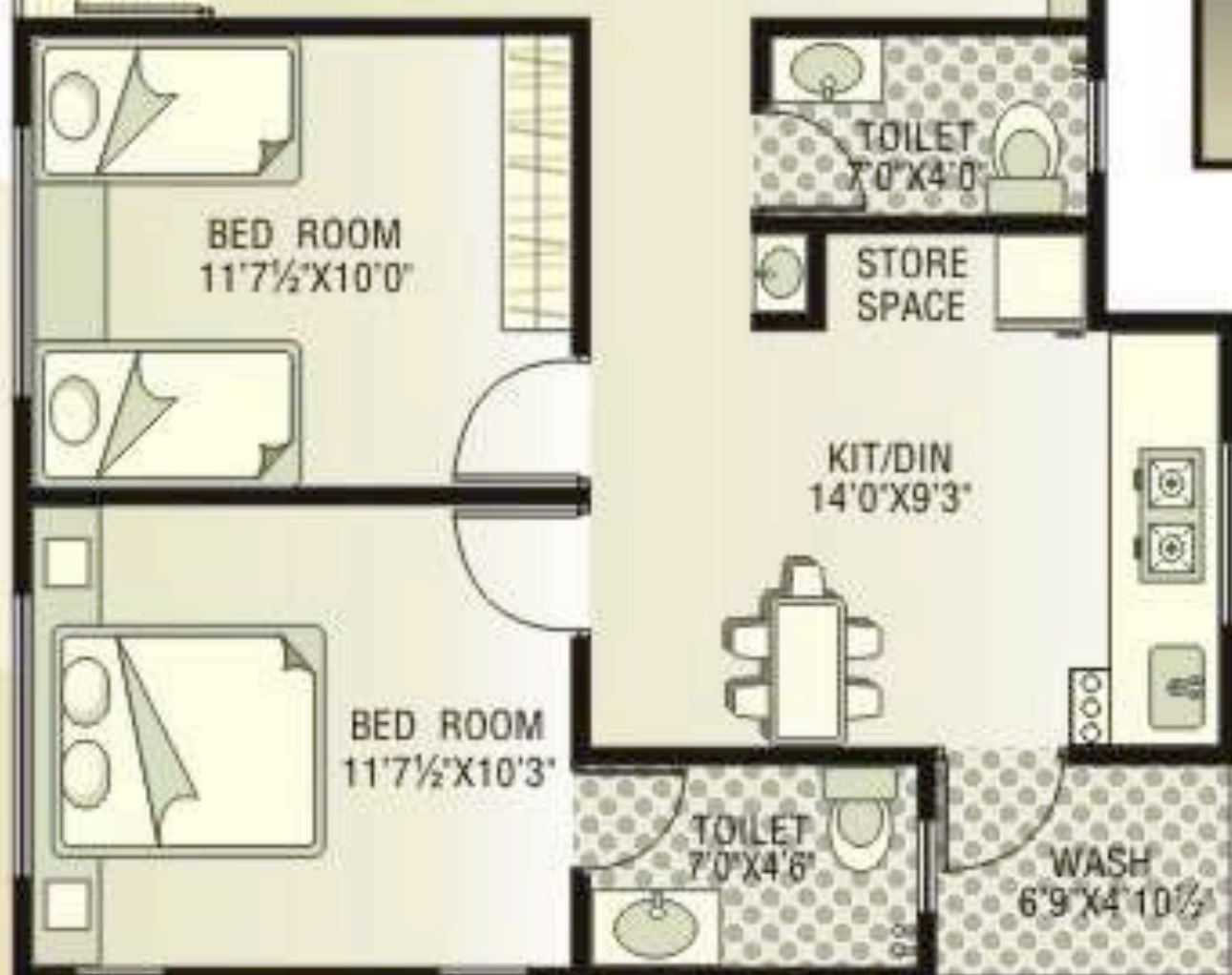
A, B, C & D
Building



B type flat

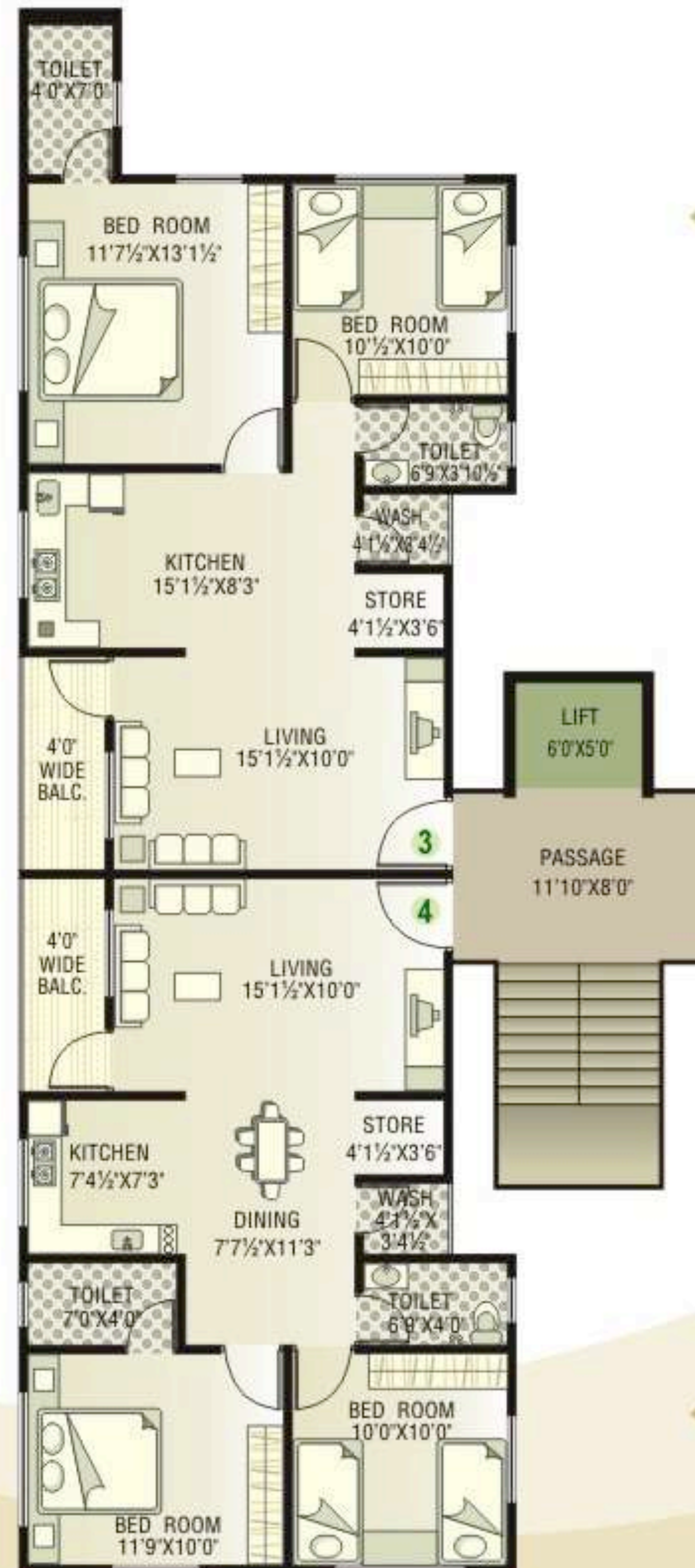
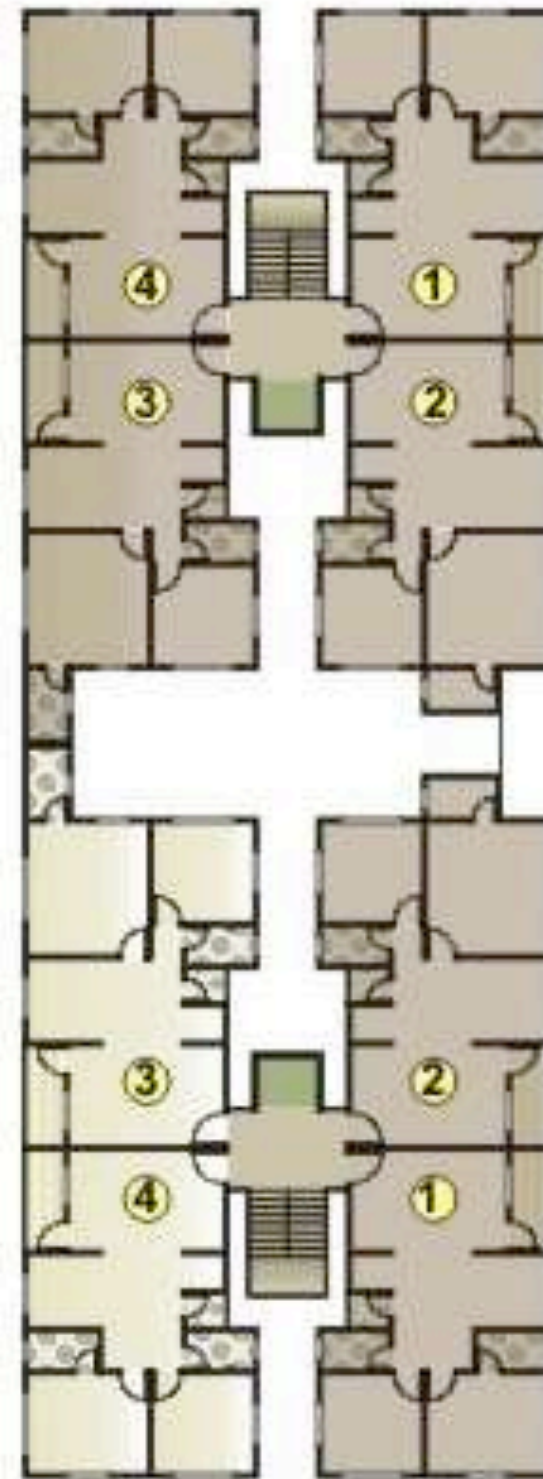


A type flat



Typical Floor Plan

E & F
Building



D type flat

C type flat



Shantiniketan



Specification

Structure

Earthquake resistant R.C.C frame design.

Plaster:

Internal plaster with putty finish and external double coat sand face plaster with acrylic water proof paint.

Kitchen

Granite platform in kitchen with S.S. sink and designer glazed tiles up to lintel level on platform. Kitchen is modular kitchen with PVC baskets and shutters.

Toilet & Plumbing

Coloured glazed tiles dado up to lintel level and european W.C. pan. Concealed plumbing with good quality P.V.C fittings & Geyser in all toilets.

Door / Window:

Decorative main door and all other doors are flush doors with good quality fittings. Powder coated aluminum section sliding window with surrounding granite seal.

Electrification

Sufficient light - point in concealed copper wiring with modular range accessories. T.V. & telephone point in living room & master bed room. MCB provision in main distribution board.

Flooring

Vitrified tiles flooring in drawing, kitchen & dining and all bedrooms. On terrace china mosaic for heat reflection & water proofing.

Amenities

- ~ Gorgeous main gate with security cabin.
- ~ Pleasant & spacious Entrance foyer.
- ~ One lift of standard quality for each building.
- ~ Ample parking area.
- ~ Beautiful landscape garden and children play area with amusement equipments.
- ~ Senior citizen seating area.
- ~ Well equipped gymnasium.
- ~ Indoor games like carrom, chess, billiards.
- ~ Intercom facility.
- ~ 24 hours water supply, common bore well with submersible pump.
- ~ Underground and over head water tank.
- ~ R.C.C / Paver block road with street lights.

Rules & Regulation

- ~ Only internal changes shall be allowed with prior permission and shall be charged extra in advance. Changes in elevation is not permitted.
- ~ Stamp duty , registration fees & service tax shall be borne by members.
- ~ A.E.C., A.M.C. & any other legal charges shall be borne by members.
- ~ Irregular payments shall cause cancellation of booking.
- ~ Developer reserves all rights to make any alteration in plan & member shall abide by such changes.
- ~ This brochure is only for easy display and information of the project and does not form part of the legal documents.



Shantiniketan



Developers

Hindva builders pvt. Ltd.
+91 98251 38080

Architect

Aayojan
Ar. Haresh J. Mahadevwala.
Surat.

St. Eng.

Yash Designs
Er. H. B. Kaswala

Booking

" Shantiniketan "

Near Kunj Mall, Next to Murtydahm,
Near Sukan Bunglows, NIKOL,
Ahmedabad.
Contact: + 91 79 65495998
+ 91 99245 88412